

February | 2023



February 2023 Equilibrium

State Leadership

President
Daniel Sumerfield (SC)

Vice President
Tyler Winkley (SE)

Treasurer
Jessica Jenness (SE)

Secretary
Shalini Prochazka (SE)

Past President
Mike Visser (SE)

Trustees
Shalini Prochazka (SE)
Tyler Winkley (SE)
Jessica Jenness (SE)
Daniel Sumerfield (SC)
Matt Leslie (SC)
Dan Tappel (SW)
Jared Plank (SW)
Brian Parsons (SP)
Matt Hoit (SP)

February 2023 Issue

1. President's Address On Mental Health & Compassion
2. Annual Student Showcase Features Four Student Groups
3. UW Tacoma Milgard Hall Showcases Mass Timber
4. Fast and Focused: New "ACI Centers of Excellence"
5. 2023 SEA NW Conference "Innovation in Structural Engineering"
6. SEAW 2023 Refresher Course
7. Get Involved with our 2023 Outreach Opportunities!
8. SEFW Elects New Board Leadership
9. WAsafe Refresher Training Coming Soon!
10. Special Wind Regions White Paper Submitted for Approval
11. Seattle Chapter Nominating Committee Notice of Nominations
12. SEAW Scholarship Applications are Open!
13. YMG Seeks Construction Tour Opportunities!
14. Calendar
15. Welcome New SEAW Members
16. Employment Opportunities
17. Applying or Renewing Your Membership In SEAW

President's Address on Mental Health and Compassion

Daniel Sumerfield, SEAW President

DISCLAIMER! I am not a health expert. In fact, I can barely stand the sight of blood without getting queasy (a personal limitation that particularly bothers me, but what can you do, it seems to be out of my control). Nor am I a mental health expert. So, consider the following as the ramblings of a mental health layman.

In March 2022, the World Health Organization released a scientific brief which considered 97 systematic, independent studies on mental health [1]. The brief concluded that the prevalence of anxiety and depression rose approximately 27% over the course of the COVID-19 pandemic. One of the main causes of this increase is attributed to social isolation, including an inability to work, to see loved ones, or to engage in community. Looking in the rearview mirror at the past three years, the increase in mental stress is not surprising.

The engineering fields, in particular, may be prone to high rates of stress. A 2018 Swineburne University study surveyed 683 respondents from eight major infrastructure companies in Australia [2]. The study was

commissioned by the companies themselves to better understand the extent of the workplace stress they had been observing among their employees. The survey found that levels of depression, anxiety, and stress in the survey respondents exceeded the levels reported by the general population by 35% to 40%. In addition, 59% of the respondents indicated they were “unsatisfied” with their work-life balance, compared to the general population which reported dissatisfaction at only a 20% rate. The study concluded that “Australian infrastructure/construction professional staff are highly stressed, report compromised mental and physical health, have unsatisfactory levels of work-life balance, and exhibit very high rates of burnout.” For a more comprehensive understanding of the survey results, I encourage you to read the study.

Unfortunately, in addition to the high incidence rate of stress, anxiety, and depression, mental health treatment among engineers might be significantly lower than the general population. In a 2015 study of 64,519 undergraduate and graduate students, researchers found that students in the business and engineering programs were the least likely to seek treatment when experiencing mental health problems [3]. The reasons aren't fully understood. However, anecdotally, this lower incidence of treatment might be attributed to the prevalence of “stress culture” (i.e., “stress is normal, just work through it!”), the prioritization of efficiency and productivity over mental well-being, and the strong desire of engineers to be self-sufficient.

None of this data seems particularly surprising to me, based on my limited personal observations of the state of the engineering consulting industry. What to do, then? I can't pretend to be an expert, I can only offer some small words of encouragement.

As individuals, we should try to be mindful of our own mental health. Every one of us has unique stresses and struggles; they are fundamental to the human condition! And we also each have unique coping mechanisms. For myself, I know the activities that work best for me to feel rebalanced: getting out into the wilderness, playing a board game with my kids, hosting friends and family in our home, experiencing live music. Our ability to help others is dependent on our own mental well-being. We should strive for balance in our life, and not be afraid to seek professional help when needed.

As coworkers, colleagues, and friends, we should do our best to destigmatize conversations around mental health. We should respond to those around us with empathy, offer support as we are able, and encourage others to seek help if necessary. Sharing personal experiences with our peers, when appropriate, can help mitigate feelings of isolation and foster mutual trust and respect.

As employers or leaders, mental health professionals agree that building a positive culture in the workplace starts with compassion. Compassion in the workplace can be fostered in many ways. Open communication is essential. Allowing employees opportunities to participate in organizational decisions, especially when those decisions could impact their stress level, will create a more positive and collaborative environment. Acknowledge employee feedback and use their suggestions to improve workplace conditions. Provide words of encouragement to your team members. Consider providing managers with training to promote office well-being and recognize signs of mental distress in team members. Encourage employees to use their vacation time.

We spend such a large portion of our lives at our workplace. Not many of us have a far-reaching influence, but each of us impacts a few people deeply each day. Practice kindness, the world can never have too much of it.

[1] World Health Organization (2022) Mental Health and COVID-19: Early Evidence of the Pandemic's Impact: Scientific Brief

[2] Luke Downey & Professor Con Stough (2018) Measuring the Psychological Impact of Work Related Stress and Related Occupational Factors in the Australian Infrastructure Construction Industry, Swinburne University

[3] Sarah Ketchen Lipson, Sasha Zhou, Blake Wagner III, Katie Beck & Daniel Eisenberg (2016) Major Differences: Variations in Undergraduate and Graduate Student Mental Health and Treatment Utilization Across Academic Disciplines, Journal of College Student Psychotherapy

Annual Student Showcase Features Four Student Groups

Evan Jordan, YMG

In January, SEAW continued its historic tradition of hosting the January Student Showcase, a night where student groups from both University of Washington and Seattle University present their work before industry professionals. The program began with the corporate showcase; ten structural engineering

companies who generously sponsored the event were provided a table and direct contact with students looking to network.

After the corporate showcase, dinner was served and students began to present. The program featured two senior capstone groups from SU and two graduate researchers from UW. One group from SU focused on their feasibility and retrofit study for an existing unreinforced masonry SCL substation in Roosevelt.



A Seattle University team with Spencer Machinski, Kamie Miyaji, and Sami Almadani presents "Seismic Evaluation of Seattle City Light's North Substation Control Building" at the SEAW Student Showcase in January.

The second group from SU described their experience in using LiDAR technology to successfully develop floor plans for an existing multi-story cabin, in addition to recommend structural modifications. The two researchers from UW began with a study on the shear effects of macro-synthetic fiber-reinforced concrete. The final presentation discussed a 10-story CLT shear wall being tested for lateral seismic loading at the outdoor shake table at the University of California, San Diego (UCSD). All presenters were fantastic and everyone left feeling more confident in the budding generation of the next structural engineers.

SEAW wants to thank all our sponsors for the event (in no particular order): Holmes, KPFF, MKA, Verco, DCI, Armour Unsderfer Engineering (AUE), CKC, Degenkolb, Lund Opsahl, and Stanley Black&Decker (DeWalt).

SEAW would also like to thank all the students who came to the event and especially to our presenters, listed in no particular order:

- Seattle University: Sami Almadani, Spenser Machinski, Kamie Miyaji, Madeline Philips, Aaron Aguon-Africa, Huynh Huynh, Lucas Lazaga, and Danny O'Brien.
- University of Washington: John Paul Gaston, Sarah Wichman



The "career fair"-style part of the Student Showcase allowed students to interact with sponsor firms.

Congratulations to our presenters on a job well done! Without their efforts the night would not have been possible.

Additionally, on January 19, SEAW hosted mock interview sessions at the University of Washington. Interviewers spent over 2 hours reviewing attendee resumes and interview skills while providing constructive feedback. I received many words of gratitude from the students for the service that SEAW members were able to provide. SEAW would like to thank our gracious volunteers for their time and effort in helping the students: Darrell Staaleson (Staaleson Engineering), John Crase (WJE), Paul Crocker (Reid Middleton), and Joni Hards (Reid Middleton).

Please reach out to Evan Jordan (ejordan@mka.com) or the YMG email (seawymg@gmail.com) if you are interested in joining the YMG!

UW Tacoma Milgard Hall Showcases Mass Timber

Jacob Baker, P.E.

The SEAW Southwest Chapter & Construction Specification Institute (CSI) Mount Rainier

Chapter kicked off the new year by touring an exciting new building on the University of Washington Tacoma downtown campus. Milgard Hall, described by the University as “A New Home for Innovation,” will house new mechanical and civil engineering degree programs as well as provide space for the growing Milgard School of Business. KPFF’s Jacob McCann, P.E., S.E., and Jessica Westermeyer, P.E., S.E. led our tour of the newly built mass-timber building, providing insight on the project and discussing interesting challenges encountered in this relatively new building type. We were all excited to see the significant turnout from both SEAW & CSI, along with great Q&A throughout the night.



Exterior of Milgard Hall at the University of Washington Tacoma, photo by Jacob McCann.”

After the tour, the group met for a lively dinner at a local conference center, where Tanner Reijm, P.E., from PCS Structural Solutions presented on the 2021 IBC changes related to mass timber and Jessica Westermeyer shared more information on Milgard Hall. One of the hot topics in the room was vibration characteristics of cross-laminated timber (CLT) floor systems with concrete topping. Design professionals can refer to a new floor vibration design guide for mass timber at the link below, published by WoodWorks.

Vibration Design Guide



Photo by Jacob McCann

Interior of Milgard Hall at University of Washington Tacoma, which shows the second floor public gathering space and highlights the use of CLT floors and glulam beams.

SEAW SW chapter was happy to see that mass timber is being used locally and in a classroom setting to help inspire future engineers. We are grateful to KPFF for volunteering their time to lead the tour and give a great presentation. All that attended came away with better understanding of mass timber and how we may be able to use it on future projects.

If you missed out on this event please plan on joining us for the next! We have several additional events planned for the year, one in March and one in May.

Fast and Focused: New "ACI Centers of Excellence"



American Concrete Institute
Always advancing



STRUCTURAL ENGINEERS
ASSOCIATION OF WASHINGTON

WA ACI Chapter and SEAW Seattle Joint Dinner Meeting

Fast and Focused: New “ACI Centers of Excellence”
Will Stimulate Rapid Industry Progress

Register to Attend

Date: Wednesday, February 22

Time: Reception begins at 6:00 PM.

Location: The Museum of Flight
9404 E. Marginal Way South, Seattle, WA 98108

Parking: Plenty of free parking with easy access to the venue.

Cost:

\$95 - WA ACI & SEAW Members

\$125 - Non Members

Registration:

The American Concrete Institute recently embarked on an exciting new initiative: opening three ACI Centers of Excellence. Each Center is an independent operating entity under the ACI umbrella, with a laser focus on specific goals and the ability to move quickly and unencumbered. NEX, the first Center, is helping to advance the use of nonmetallic construction materials. NEU, the second Center, is focused on creating a carbon-neutral concrete industry. And PRO, the recently announced Center of Excellence, is working to improve the constructability of concrete design and construction productivity.

Cary will discuss the power of ACI's new Centers of Excellence, present the details and activities of each, and explain how they broaden opportunities for individual and organizational participation. This is a meeting you don't want to miss!

Presenter: Cary Kopczynski

Cary Kopczynski, PE, SE, FACI, FPTI is the Founding Principal and CEO of Cary Kopczynski & Company (CKC), an award-winning structural engineering firm with offices in Seattle and Chicago. CKC designs major urban buildings throughout the United States and beyond. The firm has won over 80 regional, national, and international awards for engineering excellence and has been selected several times by *Zweig White* and *Civil + Structural Engineer* magazine as a top structural engineering firm to work for.



[Cary Kopczynski Full Bio](#)

2023 SEA NW Conference "Innovation in Structural Engineering"

INNOVATION IN STRUCTURAL ENGINEERING

SEA NW Conference
September 14 - 15, 2023
Hilton Bellevue - Bellevue, WA

2023



After a three-year hiatus the annual 2023 SEA Northwest Conference (NWC) will be held September 14 and 15, 2023 at the Bellevue Hilton Hotel, 15 minutes east of downtown Seattle. The NWC will be hosted by the Seattle Chapter of the Structural Engineers Association of Washington. The Conference program schedule and registration are currently being finalized and will soon be available.

2023 SEA Northwest Conference Steering Committee: Chun Lau, Chair; R. Scott Douglas, Technical Subcommittee Chair; Michelle D. Yee; Jessica Lim; Shalini Prochazka; Darrell Staaleson.

More Information

SEAW 2023 Refresher Course

STUDY FOR THE SE EXAM ON YOUR OWN



STUDY WITH THE SEAW REFRESHER



Date:
February 2 - March 28, 2023

Time:
6:30-8:30 PM

Webinar Access:
GoToMeeting

SEAW Seattle Chapter will hold its annual Refresher Course on Tuesday and Thursday evenings from February 2nd through March 28th.

The course instruction and PDF notes are designed to assist engineers preparing for the NCEES Structural Exam and for practicing engineers who want to review principles of structural engineering. Fifteen two-hour lectures will present information regarding Structural Analysis, Wind Design, Foundations & Earth Retaining Structures, Seismic Design I

Registration Fees:
SEAW & SEAO Members: \$350
Non-Members: \$425

Notes Only:
SEAW & SEAO Members: \$150
Non-Members: \$200

[Register Now!](#)

& II, Structural Steel Design I & II, Concrete Design I & II, Pre-stressed/Post-tensioned Concrete Design, Bridge Design I & II, Wood Design, Masonry Design, and Cold-Formed Steel Design.

Course presentations are exclusively offered online through GoToMeeting.

We would like to welcome Oregon SEAO members for the sixth year. SEAO Members may register at SEAW member pricing.

For those unable to attend the course, complete course notes of the most recent course are available via a download link for easy access at a price of \$150 for SEAW members, and \$200 for all others.

Course Schedule

Thursday, February 2
Introduction & Analysis
Bruce Erickson, P.E., S.E.
KPFF Consulting Engineers

Thursday, February 9
Structural Steel Design I
Mathew Wies, P.E., S.E.
DCI Engineers

Thursday, February 16
Structural Steel Design II
Mathew Wies, P.E., S.E.
DCI Engineers

Thursday, February 23
Bridge Design II
Josh Pruitt, P.E., S.E.
KPFF Consulting Engineers

Thursday, March 2
Seismic Design II
Mike Visser, P.E., S.E.
Visser Engineering

Thursday, March 9
Concrete Design II
Instructor Still Needed

Thursday, March 16
Wood Design
Instructor Still Needed

Thursday, March 23
Foundations & Earth Retaining Structures
Andrew McGlenn P.E., S.E.
Jacobs Associates

Tuesday, February 7
Wind Design
Russell Larsen, P.E., S.E.
Magnusson Klemencic Association

Tuesday, February 14
Valentine's Day
No Class

Tuesday, February 21
Bridge Design I
Josh Pruitt, P.E., S.E.
KPFF Consulting Engineers

Tuesday, February 28
Seismic Design I
Mike Visser, P.E., S.E.
Visser Engineering

Tuesday, March 7
Concrete Design I
Instructor Still Needed

Tuesday, March 14
Prestressed Concrete Design
Ron Mirahsani, P.E., S.E.
CKC Structural Engineers

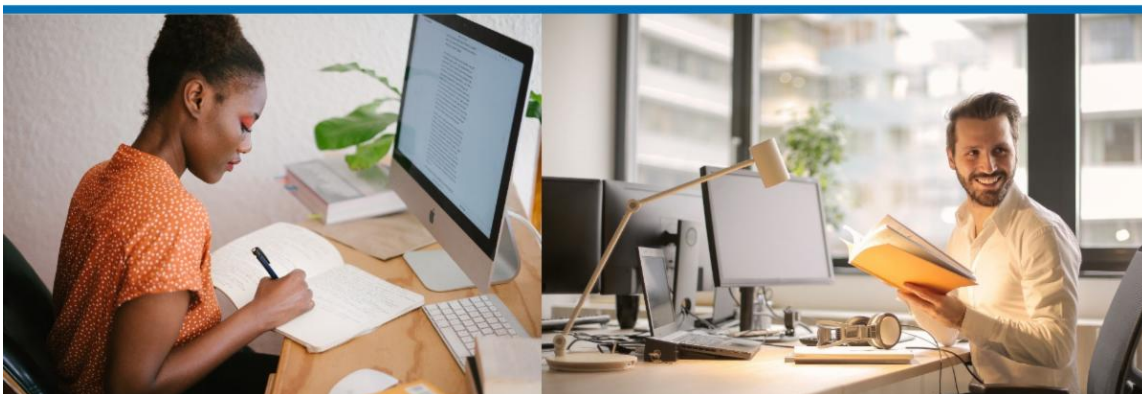
Tuesday, March 21
Masonry Design
John Hochwalt, P.E., S.E.
KPFF Consulting Engineers

Tuesday, March 28
Cold-Formed Steel Design
Chris LeVan, PE SE
KPFF Consulting Engineers Inc.

[Register Now!](#)

WHEN YOU SIMPLY WANT TO REFRESH YOUR SKILLS

THINK SEAW REFRESHER



Get Involved with Our 2023 Outreach Opportunities

By Kyle Johnson, Outreach Committee

The Structural Engineers Association of Washington formed the Outreach Committee in Spring 2016 to forge relationships with schools and organizations to promote structural engineering in the community. We organize several volunteer opportunities throughout the year including field trips, student competitions, STEM Expos, afterschool programs, and more.



Check out our volunteer opportunities on the SEAW Outreach Committee website, sign up for our mailing list to be notified of new events as we post them, or join the committee. We are currently in need of representatives on the committee from the Spokane, South Central and Southwest chapters. If you or someone from your firm would be interested in joining the committee or would like to learn more, please reach out to Kyle Johnson at kyle.johnson@coffman.com.

Upcoming events that we need volunteers for are:

- WABS Afterschool STEM Academy (ASSA). There is an informational session on February 28.
- WABS Build Cool Stuff (BCS). An informational session was held on January 23.
- WABS Accessing Career Connected Experiences for Student Success (ACCESS). There is an informational session on May 23.
- Highline Public Schools – Career Trips. Host a 10th grade class in your office for part of a day to give students the opportunity to see what it is like to work in the professional world.
- Federal Way Public Schools – STEM Exploration Night. April 12 from 6-8pm at Federal Way Public High School.

[Learn More](#)

SEFW Elects New Board Leadership

By Angela Gottula Twining, SEFW

Welcoming in 2023, the Structural Engineers Foundation of Washington held its Annual Meeting in early January. As outlined in the SEFW Bylaws, the Annual Meeting includes the appointment and election of directors and officers. Current Chair Craig Roberts of CT Engineering, who has been SEFW Chair since January 2020, conducted the meeting and facilitated the elections.

Melissa Verwest of KnifeRiver PreStress in Spokane was elected Chair, with Cale Ash of Degenkolb continuing as Vice Chair and Peter Somers of Magnusson Klemencic Associates assuming the role of a second Vice Chair. Ted Smith, formerly of Smith & Huston, is continuing as Secretary/Treasurer. While the term for the Chair is three years, the Vice Chair positions at times change annually.

I thank the board for extending me such a compliment by inviting me to serve in the Chair position for SEFW," Melissa said. "My excitement to take on this role aligns well with the ever-present passion and dedication of the members of the SEFW board. Together, we can anticipate much success to continue to promote the profession of structural engineering through scholarship, education, research, and outreach.

The only new addition to the Board is Jared Plank of PCS Structural Solutions in Tacoma is joining the Board this year, the first SEAW Southwest member of the Board to date. No members of the Board are stepping down this year.

As "Past Chair," Craig Roberts will advise the current leadership during a transitional period. The board currently consists of 14 directors with a part-time executive director. Additionally, the SEAW Board of Trustees President is a voting member, while the SEAW Chapter presidents are invited to participate in an ex-officio, non-voting capacity.

At the Annual Meeting, the Board discussed financial and fundraising reports from 2022 and well as plans for 2023, including plans for carrying out the SEFW mission of advancing the structural engineering profession through scholarships, education, research, and outreach. SEFW is also planning a Donor Appreciation Event, the last one being held in 2017. The Board is also focusing on engaging members from each SEAW Chapter this year.

We look forward to a wonderful 2023!



Melissa Verwest



Cale Ash



Peter Somers



Ted Smith

*The 2023-2024 SEFW leadership,
elected in January.*

WAsafe Refresher Training Coming Soon!

By Joyce Lem, DPRC

The refresher training for WAsafe will be released soon for those who wish to renew their WAsafe registration. Beta-testing of the training started in late January and hopefully it will be finalized and released in late February. The online training will include a short final exam that needs to be passed in order to renew enrollment and receive a new WAsafe badge.

The plan is to allow 12 months from the expiration date on your WAsafe card for renewal. We know that several WAsafe registrations expired as long ago as January 1, 2022, and are already beyond this 12-month window. Furthermore, expiration dates for WAsafe registrations are at the end of each quarter, and more registrations will expire at the end of March. Not to worry – we will allow several months for renewal once we launch the refresher training.

Alternatively, you can take a full WAsafe training to renew your WAsafe registration. A full WAsafe training is being held on March 20, at the Annual Education Institute (AEI) in Lynnwood, WA, an annual multi-day event of the Washington Association of Building Officials (WABO). Details about the AEI and pricing can be [found here](#). Classes are in-person from 8:30AM-4:30PM, with lunch



Take a full WAsafe training or renew your WAsafe registration at the WABO Annual Education Institute in March.

provided. Registration fees for the one-day class increases by \$50 after February 17. Newcomers to the WAsafe program are welcome to the training, too.

What are WAsafe and WAserv? *WAsafe* is our statewide program for volunteer Building Safety Evaluators who have registered in *WAserv*, the electronic registry for enrolling, managing, and dispatching volunteers following a disaster such as a major earthquake.

For more details about WAsafe and the Disaster Preparation & Response Committee (DPRC), please see the [SEAW Disaster Prep and Response Committee \(DPRC\) webpage](#). To receive committee announcements and meeting agendas, join the DPRC email list (see the webpage). Join us at our monthly committee meetings -- online on the third Tuesday of the month, Noon – 1pm (links given in the emailed agendas). Our committee welcomes new members and those who want to find out more.

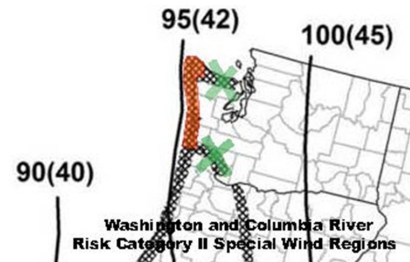
If you have any questions about the WAsafe program, please feel free to [contact me](#).

Special Wind Regions White Paper Submitted for Approval

By Scott Douglas, Wind

The Wind Engineering Committee submits the following report for the Winter Equilibrium:

- **Washington/Columbia Special Wind Regions (SWR) Study** – The SEAW WEC has authored an SEAW White Paper that supports the recommendations in CPP's Special Wind Region Study for Washington State and Columbia River, dated August 1, 2022. The White Paper was submitted to the SEAW State Board for review and approval. The State Board set up an ad hoc group to review the White Paper. State Board comments have been either incorporated or resolved. It is expected the White Paper will be approved at the Board of Trustees meeting February 3, 2023. After State Board approval the recommendations in the White Paper, titled ASCE 7 Special Wind Regions in Washington State, will then be submitted for adoption by the Washington State Building Code Council, and for eventual inclusion in ASCE 7 and the IBC. A summary of the White Paper has been posted at the bottom of the "Resources" page on the [WABO website](#).
- **City of Bellevue Kzt Map** – The next effort of the SEAW WEC will focus on generating a Kzt Wind Load Map replicating the format of the existing City of Seattle Wind Load Factor map for the City of Bellevue's consideration. If adopted, the map will facilitate a rapid determination of Kzt and shoreline exposure factors in the City of Bellevue.
- **Update to the 2004 SEAW commentary on wind code provisions (ATC 60)** The NCSEA CAC Wind Engineering Subcommittee is proceeding with this update effort. An outline is being developed for the new commentary in order not to duplicate commentary in ASCE 7 or other publications.
- **Participation** - All SEAW members, whatever their experience, are encouraged to participate at in WEC meetings. Please contact the WEC chair, Scott Douglas sdouglasscott@gmail.com, to join the SEAW WEC and receive additional information and announcements on Committee activities and actions.
- **Next Meeting** – Friday January 24, 2023, from 12-1 PM. Meeting will be virtual via the following Zoom link:
 - [Zoom Link](#)
 - Meeting ID: 844 5206 8429
 - Passcode: 596869



Seattle Chapter Nominating Committee Notice of Nominations

By Darrel Staaleson, Nominating Committee

In accordance with our Bylaws, the Seattle Chapter Nominating Committee was formed by the Seattle Chapter President, Tyler Winkley. The Nominating Committee works to select candidates for officers from among those who have actively served on the Board of Director and who have a good working knowledge of our association and have demonstrated leadership skills or potential. We look closely at leaders coming from YMG. The Nominating Committee works to select members for the Board of Directors from a diverse cross section of our industry. And the work of the Nominating Committee is done throughout the year by encouraging members to become involved and, as TR (Teddy Roosevelt) said, you lead and

inspire “not by pointing the way. You lead by Riding the Horse!” The goal is to gather the names of nominees before the committee meets.

The Nominating Committee will meet in FEB 2023 to consider candidates for officers and for the Board of Directors. If you are interested in serving on the Board of Directors, please contact the Chair.

Some of the benefits of service and leadership in SEAW:

- Valuable part of our required profession development in Washington State.
- Interact with fellow engineers in the Seattle area, Pacific Northwest, and the USA.
- Gain experience in public speaking and running effective meetings, which makes you more valuable to Clients and Employers.

The formal announcement to the membership will be published in the near future. The Call for Elections will go out (10) days following.

Committee Members:

Darrell Staaleson (chair)

Chun Lau

Tyler Winkley, Seattle Chapter President (ex officio)

SEAW Scholarship Applications are Open!

By Kevin Solberg, Scholarship and Lisette Terry, DEI Committee

All SEAW members are invited to publicize the TWO SEAW Scholarship opportunities which are currently open.

OPPORTUNITY #1: [SEAW Scholarship Program](#)

The Structural Engineers Association of Washington (SEAW) is offering \$5,000 scholarships to current college or university students studying Structural Engineering and planning to make their professional career in the practice of Structural Engineering.



SEAW Board of Trustees President Darrell Staaleson awards an SEAW Scholarship to Lindsey Peterson at the 2019 Spring Social.

Requirements of Students applying for the SEAW Scholarship:

- Official resident of the State of Washington. Residents of this state attending schools in other states are eligible. Students attending in-state schools on a nonresident basis are not eligible.
- At the time of application, be currently enrolled in a program of study majoring in Structural Engineering as a senior undergraduate or as a graduate student.
- Having a commitment to making a professional career in the practice of Structural Engineering.

How to Apply:

- Obtain application materials from the [SEAW website](#):
- Have all documents submitted to the SEAW office by February 28th to be considered for the current year's scholarship award.

How the Scholarship Award Recipient is selected:

From qualified students submitting applications, the SEAW selection committee will determine those to be interviewed. Those applicants to be interviewed will be notified by April 8th, and interviews will be scheduled. Only those interviewed will be given further consideration. Final decisions relating to all matters of eligibility and award of the Scholarship rests solely with the SEAW selection committee.

Scholarship recipients will be announced in April.

OPPORTUNITY #2: [SEAW DEI Scholarship Program](#)

The Structural Engineers Association of Washington Diversity Equity & Inclusion Committee (SEAW DEI) is offering a \$5,000 Scholarship with an externship opportunity to a current students at community college who are committed to pursuing a degree in Civil Engineering at a Washington university and a professional career in Structural Engineering.

Who Should Apply?

- Historically underrepresented groups in Civil Engineering (those who identify as BIPOC, Women, LGBTQ+, Disabled)
- Currently enrolled in any WA accredited college or community college
- Show proof of application or acceptance into a Civil Engineering program at UW, WSU, Seattle University, Gonzaga University, or Saint Martin's University and start the degree in the following school year.

Deadline: March 1, 2023

For More Information, please email dei@seaw.org

YMG Seeks Construction Tour Opportunities!

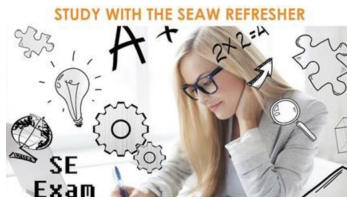
By Anandharam Mourougassamy, YMG

Are you or your company involved with a project currently under construction in the Greater Seattle area? SEAW YMG is willing to facilitate construction site tours for younger engineers and to provide a chance to learn about construction practices to complement their structural engineering skills! Fill out your information in the [link here](#) and a SEAW YMG member will be shortly in touch!



Calendar

STUDY FOR THE SE EXAM ON YOUR OWN



February 2, 2023

SEAW Refresher Course

SEAW Seattle Chapter will hold its annual Refresher Course on Tuesday and Thursday evenings from February 2nd through March 28th.

6:30PM - 8:30PM

GoToMeeting

[Register to Attend](#)



American Concrete Institute

Always advancing

February 22, 2023

WA ACI Chapter and SEAW Seattle Joint Dinner Meeting

The American Concrete Institute recently embarked on an exciting new initiative: opening three ACI Centers of Excellence. Each Center is an independent operating entity under the ACI umbrella, with a laser focus on specific goals and the ability to move quickly and unencumbered.

6:00PM - 8:00PM

Museum of Flight

[Register to Attend](#)

Save the Date!



September 14-25, 2023
2023 SEA NW Conference
"Innovation in Structural Engineering"

Hilton Bellevue
300 112th Ave SE | Bellevue WA 98004

[More Information](#)

Welcome New SEAW Members!

Welcome

Tracy Bacon

Tracy Bacon Architect LLC
Associate in the So. Central Chapter

Dev Bell

Bell Design Company
Member PE in the So. Central Chapter

Adrienne Busch

Fisher Construction Group
Member PE in the Southwest Chapter

Isabel Cushman

Magnusson Klemencic Associates
Associate in the Seattle Chapter

Jake Rust

Bell Design Company
Associate in the So. Central Chapter

Doug Lindquist

Haley & Aldrich
Member SE in the Seattle Chapter

Purvesh Luhar

Holmes US
Member SE in the Seattle Chapter

Bethany Patton

Fisher Construction Group
Student in Southwest Chapter

Michael Reynolds

DuraFuse Frames
Member PE in the So. Central Chapter

Nathan Sieler

Integrus Architecture
Member SE in the Spokane Chapter

Kyle Sullivan

Holmes US
Member PE in the Seattle Chapter

Tommy Tang

COWI North America
Associate in the Seattle Chapter

Employment Opportunities

Are you currently seeking employment as a structural engineer, senior manager, or a senior engineer technician? Check out our job board for [current employment opportunities](#).

Structural Engineer

Company: ADC Engineering
Location: Charleston, SC; Greenville, SC; Columbia, SC



Description & Details:

With offices in the Charleston, Columbia and Greenville areas, ADC provides civil and structural engineering, and landscape architecture on a broad-range of projects from historic renovations to massive federal site designs. ADC owes its 30+ years of success to the employees that work as a team, consistently giving our clients exceptional service. Just named to the Zweig Group Hot Firm List for being one of the top 100 fastest growing A/E firms in the United States, along with being named one of the

2018 Best Places to Work in SC, ADC is seeking a Structural Engineer which is an opportunity in any of our 3 office locations.

Please see [ADC Engineering's website](#) to apply or contact [Steven Truschka](#).

Bridge/ Structural Engineer

Company: Otak

Location: Redmond, WA/ Vancouver, WA



Description & Details:

Otak is hiring a Bridge/Structural Engineer to join our team! Our Bridge/Structural Engineer collaborates with multi-discipline engineers, planners, architects, and public and private clients to design solutions for bridge and structure projects of all types, sizes and levels of complexity. From designing pedestrian and vehicular bridges; facilities at local, state and national parks; community transit services; and site development structures, we continually seek the best balance among the demands of form, function, safety, sustainability, constructability, schedule and budget.

Otak is a multidisciplinary design firm. We are a highly collaborative team with award-winning multidisciplinary expertise in urban design, architecture, planning, engineering, and construction management. With deep roots in the Pacific Northwest while expanding rapidly to Colorado, we have built a strong reputation for excellence in smart urban growth planning, sustainable design and development, and innovative transportation solutions.

This position may be based out of either our Redmond, WA or Vancouver, WA office.

To learn more about this position, please visit: [Bridge/Structural Engineer - Redmond, WA](#) or [Bridge/Structural Engineer - Vancouver, WA](#)

Structural Plan Review Engineer

Company: West Coast Code Consultants, Inc. (WC³)

Location: Lynnwood, WA



Description & Details:

West Coast Code Consultants, Inc. (WC³) is a premier provider of plan review, inspection and staff augmentation services in the building, fire, civil, and energy disciplines. Our firm acts as an extension of the communities we serve, providing detailed code compliance, complete fire and life safety, as well as thorough engineering and inspection services. We serve local, state and federal agencies with a Corporate Office located in San Ramon, CA, and 10 additional Regional/Satellite Offices located primarily throughout the western United States.

WC³ is seeking a skilled Structural Plan Review Engineer who has 5+ years of structural design or plan review experience to fill an open position in our regional office located in Lynnwood, Washington. This position provides the opportunity to work with jurisdictional clients, their applicants, contractors, and engineering design teams associated with simple to complex projects currently proposed in the building construction industry. Candidates will be responsible for providing meaningful input through the review of drawings, as well as analyzing calculations, soils reports, and other construction documents involving single family, multi-family, commercial construction and more. A primary focus will be to ensure compliance with applicable building codes, design standards, and structural requirements.

Click here to learn more about this position and apply. Interested applicants can also visit www.WC-3.com/About/Careers or email your resume to jobs@WC-3.com.

Structural Project Engineer

Company: Kramer, Gehlen & Associates (KGA), Inc.

Location: Vancouver, WA



Description & Details:

Kramer Gehlen & Associates, Inc. is a growing, well-established structural engineering firm in Vancouver, WA-- seeking a skilled, Structural Project Engineer to join our team who has 2 to 5 years of experience. Responsibilities include engineering analysis, project management, coordination of structural drawings, and development of lateral systems for low rise construction. Additional duties include technical writing and reporting, client relationship building, mentoring junior staff, performing engineering calculations, and preparing construction documents.

Click here to learn more about this position. To apply, please email your cover letter and resume to: info@kramer-gehlen.com.

Senior Structural Engineer

Company: Brown and Caldwell
Location: Seattle, WA



Description & Details:

Brown and Caldwell, a national environmental engineering firm, has a new opportunity for a Structural Engineer to provide project leadership and technical proficiency to deliver high quality designs for a portfolio of clients. We are seeking a motivated and achievement-oriented individual to take ownership of the structural design on projects and be accountable for the delivery of the project structural team. When you join Brown and Caldwell you will enjoy a unique and welcoming culture. You will find that we offer a non-hierarchical, collaborative, and supportive environment, allowing you to do your best work. You will be trusted to do the right thing by our project managers and external clients. The work we do is interesting, challenging and wide-ranging in nature, and so is our client base.

[Click here](#) to learn more about this position and apply today.

Structural Engineer

Company: MLA Engineering
Location: Seattle, WA



Description & Details:

MLA Engineering's 24-year history of serving public and private industries has elevated MLA to an exceptional firm that is highly regarded in the Pacific Northwest and the USA. The diversity of project types and relaxed professional culture makes this a unique opportunity for an engineer who loves to learn, collaborate, and seeks rewarding work. A candidate with a solid foundation in engineering principals and is skilled in using state-of-the-art software, designing with all major construction materials, and communicating effectively on a project team will be an excellent fit.

Our Seattle staff enjoys designing diverse projects that require critical thinking and creativity. MLA is known for engineering public infrastructure, aquarium and zoo facilities, and community buildings. We combine the opportunity of engineering unique and exciting projects with work flexibility, a cooperative culture, and value that employees feel in a small business atmosphere.

Qualifications required:

- Bachelor of Science Degree (Masters of Science preferred);
- Strong technical and analytical skills;
- Intuitive and practical;
- Using REVIT as a design coordination tool;
- Excels in a team environment.

MLA is an equal opportunity employer. Our comprehensive benefits package includes a competitive salary, 401K matching contribution (up to 4%), medical, dental, vision insurance, and HRA account.

Website: www.mlaengineering.com

Please send your résumé and cover letter to info@mlaengineering.com.

Structural Design Engineer

Company: Quantum Consulting Engineers, LLC
Location: Seattle, WA



Description & Details:

Quantum Consulting Engineers, a structural engineering firm that has been part of downtown Seattle for over 20 years, is seeking a project engineer with a minimum of 2 to 6 years relevant experience. Experience should include designing a variety of residential and commercial building types and structures in a wide range of building materials, including concrete, steel, masonry, and wood-frame construction. Familiarity with structural detailing, seismic design, and evaluation of existing structures is a plus. Candidates must have earned a bachelor's degree in engineering. A professional engineering (PE) license is preferred. Excellent verbal and written communication skills are required.

We offer a friendly and supportive work environment focused on teamwork, collaboration, and respect, with opportunity for growth and advancement. We firmly believe that everyone truly makes a difference and encourage ideas, input, and insight on projects with an emphasis on client relationships to provide the best possible service.

Benefits include medical, dental, and vision insurance coverage; paid vacation, holiday, and sick leave; a SIMPLE IRA plan, a cafeteria plan; pre-tax transportation benefits (ORCA); and funds for professional licensing and seminars. Competitive salary commensurate on experience.

For general company information and profiles of some of our noteworthy projects, visit our website at www.quantumce.com. To apply, please send your resume and cover letter to HR@quantumce.com. No phone calls please.

Design Engineers and Project Managers

Company: CKC Structural Engineers
Location: Bellevue, WA



Description & Details:

CKC is an award-winning structural engineering firm with a strong backlog of diverse, high-profile projects across the country. Our work includes major urban projects, such as high-rise residential buildings, office buildings, hotel, retail, and parking structures of all types and sizes.

We are looking for bright and dynamic professionals to join our growing team. If you thrive in a fast-paced, team-oriented work environment and want to work on exciting projects that challenge your ability, we'd like to hear from you.

Please email your resume and cover letter to jobs@ckcps.com or visit www.ckcps.com/careers.

Applying or Renewing your Membership in SEAW

SEAW is organized into the membership categories and their corresponding dues structures listed below. Select the membership category that best fits your status.

Your contact information is shared with our foundation, SEFW.
In order to "opt-out" please [contact](#) the association office. [Click here](#) for our privacy policy.

[Join or Renew Today](#)

Please consider making a line-item donation to [SEFW](#) as part of your dues renewal. Special designation can be placed on the donation, so it can be applied to scholarships, disaster preparedness or research opportunities. SEFW fulfills its mission with the assistance of donations from individuals and corporations.

More information on SEFW and its mission to promote structural engineering can be found at www.sefw.org. Thank you for your support!

Structural Engineers Association of Washington

info@seaw.org | 206.338.7376 | www.seaw.org

SEAW | 5727 Baker Way NW, Suite 200, Gig Harbor, WA 98332

[Unsubscribe seaw@aminc.org](mailto:seaw@aminc.org)

[Update Profile](#) | [Constant Contact Data](#)
[Notice](#)

Sent by seaw@aminc.org powered by



Try email marketing for free today!